

M60/M62/M66 Simister Island Interchange

TR010064

2.6 TRAFFIC REGULATIONS MEASURES PLANS

APFP Regulation 5(2)(o)

Planning Act 2008

Infrastructure Planning (Applications: Prescribed
Forms and Procedure) Regulations 2009

VOLUME 2

April 2024

Infrastructure Planning

Planning Act 2008

**The Infrastructure Planning
(Applications: Prescribed Forms and
Procedure) Regulations 2009**

M60/M62/M66 Simister Island Interchange
Development Consent Order 202[]

TRAFFIC REGULATIONS MEASURES PLANS

Regulation Reference	Regulation 5(2)(o)
Planning Inspectorate Scheme Reference	TR010064
Application Document Reference	TR010064/APP/2.6
Author	M60/M62/M66 Simister Island Interchange Project Team

Version	Date	Status of Version
P01	April 2024	DCO APPLICATION ISSUE

CONTENTS

1	Introduction.....	1
1.1	Purpose of this document.....	1
2	Schedule of Plans included in this Application Document.....	1

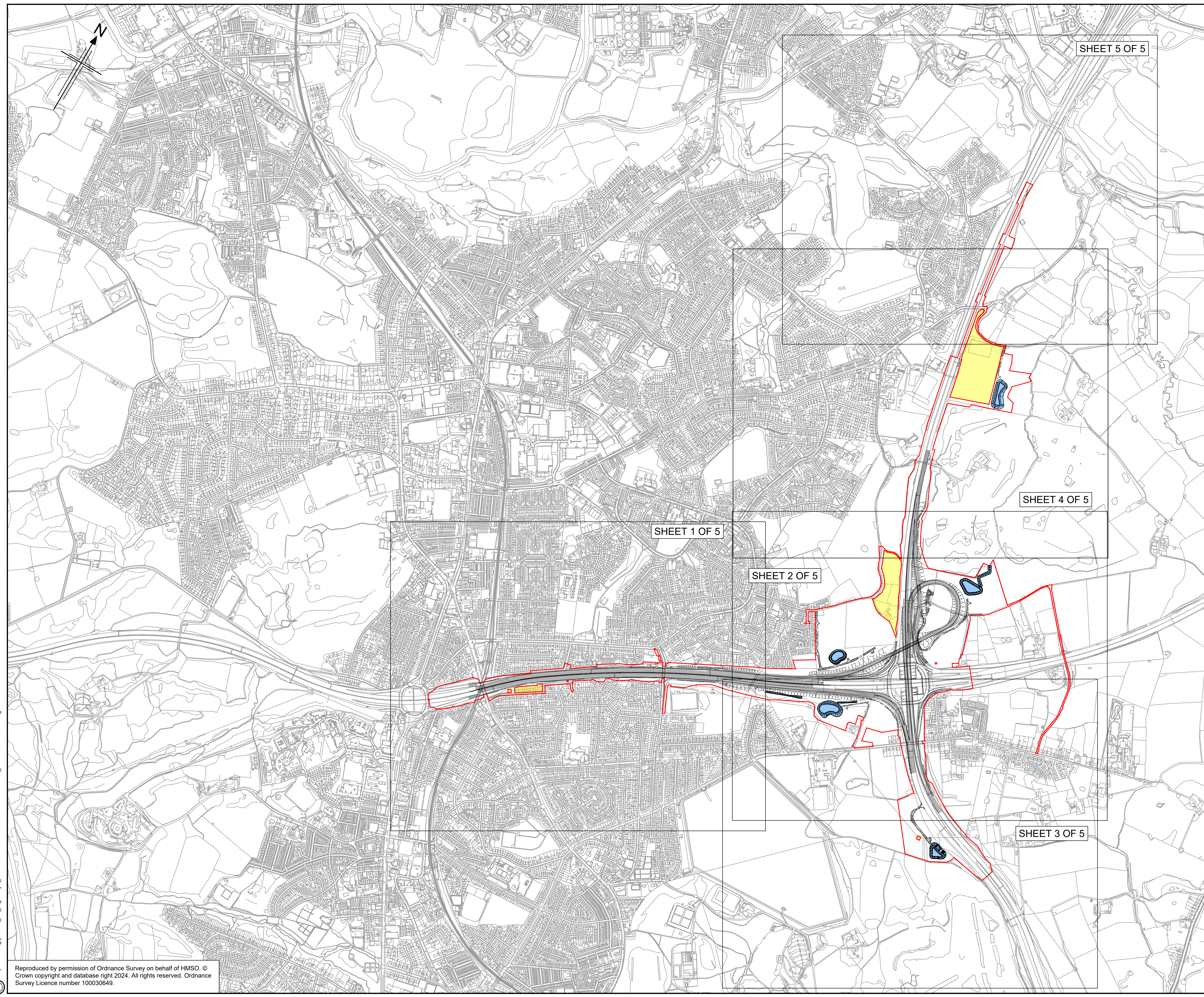
1 Introduction

1.1 Purpose of this document

- 1.1.1 These Traffic Regulations Measures Plans (the “Plans”) relate to an application made by National Highways (the “Applicant”) to the Secretary of State for Transport via the Planning Inspectorate (the “Inspectorate”) under the Planning Act 2008 (the “2008 Act”) for a Development Consent Order (DCO). If made, the DCO would grant consent for the M60 J18 Simister Island Interchange (the “Scheme”). A detailed description of the Scheme can be found in Chapter 2, The Scheme of the Environmental Statement (ES) (TR010064/APP/6.1)
- 1.1.2 As these Plans are part of the application documentation, they should be read alongside and are informed by the Book of Reference (TR010064/APP/4.3) and the Statement of Reasons (TR010064/APP/4.1).

2 Schedule of Plans included in this Application Document

Drawing Number	Drawing Title	Revision
HE548642-JAC-LDC-SII_MLT-DR-Z-3000	TRAFFIC REGULATIONS MEASURES PLANS REGULATION 5(2)(o) KEY PLAN	P01
HE548642-JAC-LDC-SII_MLT-DR-Z-3001	TRAFFIC REGULATIONS MEASURES PLANS REGULATION 5(2)(o) SHEET 1 OF 5	P01
HE548642-JAC-LDC-SII_MLT-DR-Z-3002	TRAFFIC REGULATIONS MEASURES PLANS REGULATION 5(2)(o) SHEET 2 OF 5	P01
HE548642-JAC-LDC-SII_MLT-DR-Z-3003	TRAFFIC REGULATIONS MEASURES PLANS REGULATION 5(2)(o) SHEET 3 OF 5	P01
HE548642-JAC-LDC-SII_MLT-DR-Z-3004	TRAFFIC REGULATIONS MEASURES PLANS REGULATION 5(2)(o) SHEET 4 OF 5	P01
HE548642-JAC-LDC-SII_MLT-DR-Z-3005	TRAFFIC REGULATIONS MEASURES PLANS REGULATION 5(2)(o) SHEET 5 OF 5	P01



- Notes**
- All dimensions, chainages, levels and co-ordinates are in metres unless stated otherwise.
 - This drawing is to be read in conjunction with all other relevant documentation.
 - The proposed designs shown are illustrative only and will be subject to change as part of detailed design development.
 - The Prohibition of Entry signs are pointing to parts of the scheme that are stopped up for public access. Refer to Streets, Rights of Way and Access Plans (document reference TR010064/APP/2.5).

- Key**
- The Order Limits
 - Land not included within the Order Limits
 - The Scheme
 - Ponds
 - Swales

P01	06/02/24	DCO SUBMISSION	TA	AP	RB	RB
Rev	Rev. Date	Purpose of revision	Drawn	Checked	Rev'd	Appr'd
Development Consent Order Number:			Development Consent Order Drawing Number:			
TR010064			TR010064/APP/2.6			

Client

Project **M60/M62/M66 SIMISTER ISLAND INTERCHANGE**

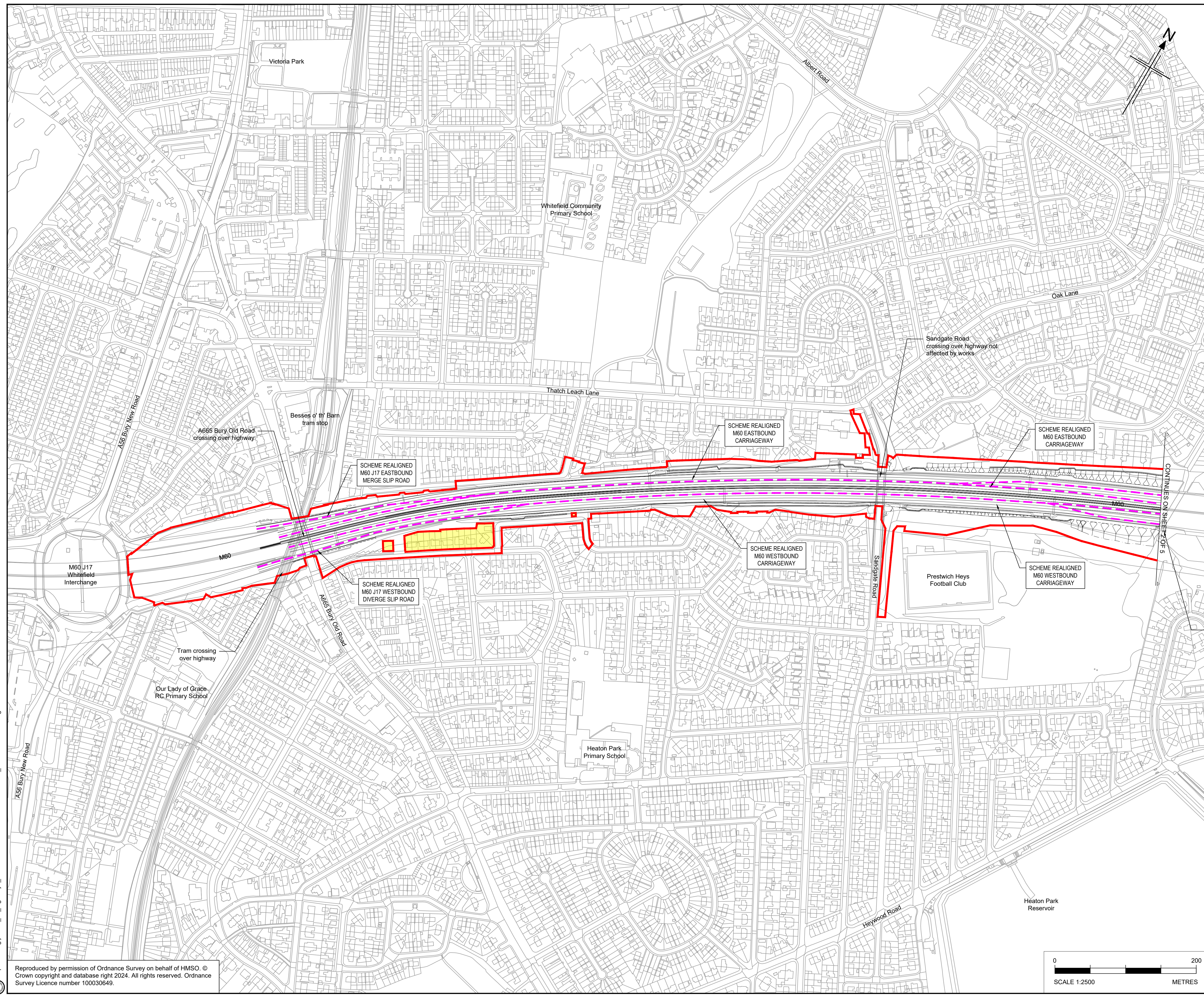
Drawing title **TRAFFIC REGULATIONS
MEASURES PLANS
REGULATION 5(2)(O)
KEY PLAN**

Regulation	Regulation 5(2)(O)	
Purpose of issue	DCO APPLICATION	
State Code	PRELIMINARY	
Project Stage	PCF STAGE 3	Drawing status
Scale at A1 (841x594mm)	NTS@N/A	S4
Jacobs No.	B36601F0	Rev
Client no.	HE548642	P01

Drawing number **HE548642 - JAC - LDC - SII_MLT** | Originator **JAC** | Volume **- LDC -**
 Location **SII_MLT** | Type | Role | Number **-DR- Z -3000**

C:\working\jacobs_uk_highways_ssa\0327613\HE548642-LDC-SII_MLT-DR-Z-3000.dwg - 06/02/2024 21:09:46 - A1 Frame - ArbowT

Reproduced by permission of Ordnance Survey on behalf of HMSO. © Crown copyright and database right 2024. All rights reserved. Ordnance Survey Licence number 100030649.



- Notes**
- All dimensions, chainages, levels and co-ordinates are in metres unless stated otherwise.
 - This drawing is to be read in conjunction with all other relevant documentation.
 - The scheme designs shown are illustrative only and will be subject to change as part of detailed design development.
 - The Prohibition of Entry signs are pointing to parts of the scheme that are stopped up for public access. Refer to Streets, Rights of Way and Access Plans (document reference TR010064/APP/2.5).

- Key**
- The Order Limits
 - Land not included within the Order Limits
 - The Scheme
 - Ponds
 - Swales
 - Scheme 30mph Speed Limit
 - Scheme 40mph Speed Limit
 - Scheme 50mph Speed Limit
 - Scheme National Speed Limit
 - Scheme Special Road Speed Limit
 - Local Authority Boundary
 - Scheme Prohibition Of Entry
 - Scheme Variable Speed Limit
 - Scheme Variable Speed Limit Ends
 - Scheme Structure

CONTINUES ON SHEET 2 OF 5

P01	06/02/24	DCO SUBMISSION	TA	AP	RB	RB
Rev	Rev. Date	Purpose of revision	Drawn	Checked	Rev'd	Apprv'd
Development Consent Order Number: TR010064			Development Consent Order Drawing Number: TR010064/APP/2.6			



Project: M60/M62/M66 SIMISTER ISLAND INTERCHANGE

Drawing title: **TRAFFIC REGULATION MEASURES PLANS REGULATION 5(2)(O) SHEET 1 OF 5**

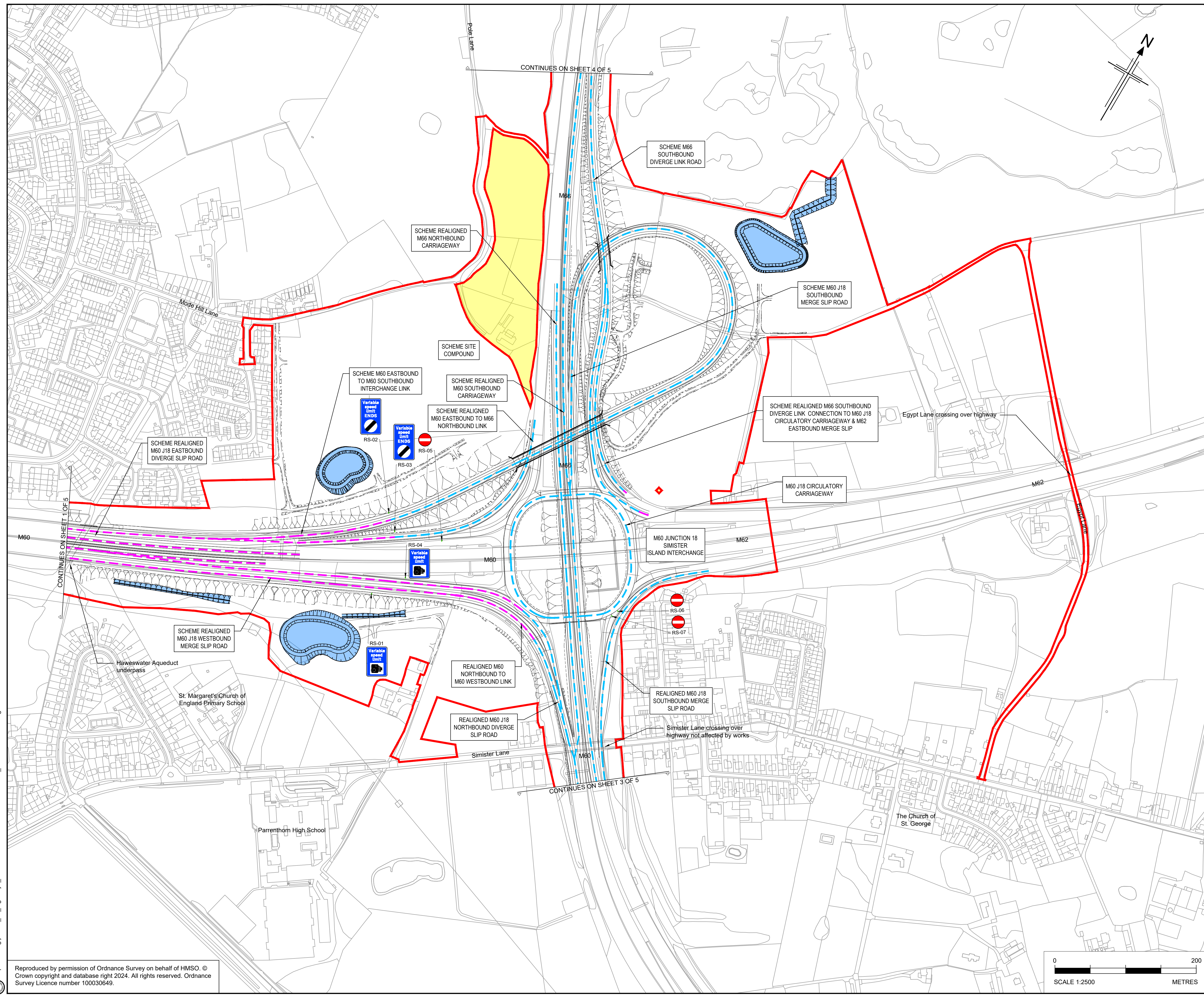
Regulation	Regulation 5(2)(O)	
Purpose of issue	DCO APPLICATION	
State Code	PRELIMINARY	
Project Stage	PCF STAGE 3	Drawing status
Scale at A1 (841x594mm)	1:2500@A1	S4
Jacobs No.	B36601F0	Rev
Client no.	HE548642	P01

Drawing number: HE548642 - JAC - LDC - SII_MLT
 Originator: JAC
 Volume: LDC - DR - Z -3001



C:\working\jacobs_uk_highways_ssa\0327613\HE548642-LDC-SII_MLT-DR-Z-3001.dwg - 06/02/2024 20:50:39 - A1 Frame - Arrow

Reproduced by permission of Ordnance Survey on behalf of HMSO © Crown copyright and database right 2024. All rights reserved. Ordnance Survey Licence number 100030649.



- Notes**
- All dimensions, chainages, levels and co-ordinates are in metres unless stated otherwise.
 - This drawing is to be read in conjunction with all other relevant documentation.
 - The scheme designs shown are illustrative only and will be subject to change as part of detailed design development.
 - The Prohibition of Entry signs are pointing to parts of the scheme that are stopped up for public access. Refer to Streets, Rights of Way and Access Plans (document reference TR010064/APP/2.5).

Key

- The Order Limits
- Land not included within the Order Limits
- The Scheme
- Ponds
- Swales
- Scheme 30mph Speed Limit
- Scheme 40mph Speed Limit
- Scheme 50mph Speed Limit
- Scheme National Speed Limit
- Scheme Special Road Speed Limit
- Local Authority Boundary
- Scheme Prohibition Of Entry
- Scheme Variable Speed Limit
- Scheme Variable Speed Limit Ends
- Scheme Structure

Rev	Rev. Date	Purpose of revision	Drawn	Checked	Rev'd	Appr'd
P01	06/02/24	DCO SUBMISSION	TA	AP	RB	RB
Development Consent Order Number:			Development Consent Order Drawing Number:			
TR010064			TR010064/APP/2.6			



Project: **M60/M62/M66 SIMISTER ISLAND INTERCHANGE**

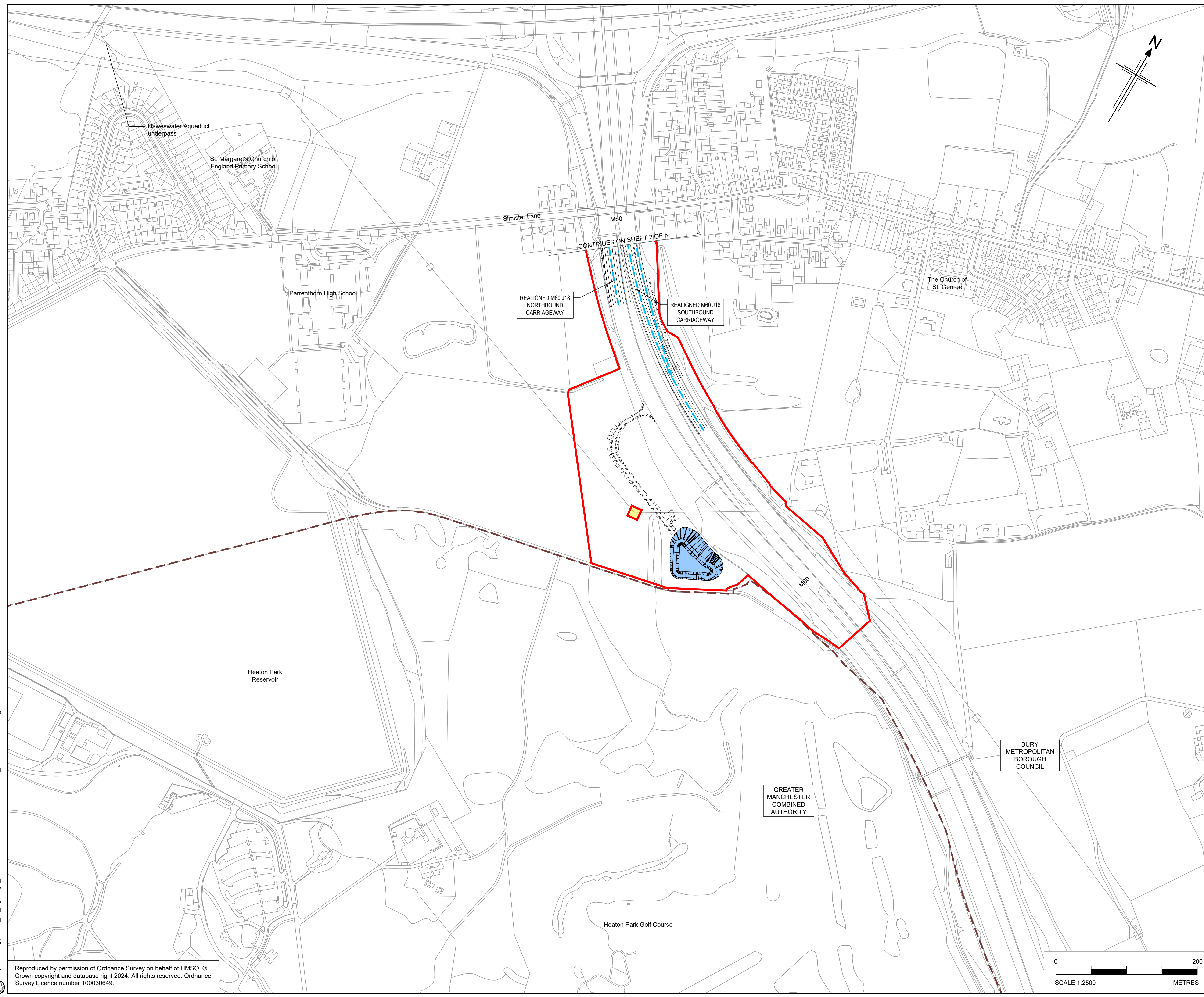
Drawing title: **TRAFFIC REGULATION MEASURES PLANS REGULATION 5(2)(O) SHEET 2 OF 5**

Regulation	Regulation 5(2)(O)	
Purpose of issue	DCO APPLICATION	
State Code	PRELIMINARY	
Project Stage	PCF STAGE 3	Drawing status
Scale at A1 (841x594mm)	1:2500@A1	S4
Jacobs No.	B36601F0	Rev
Client no.	HE548642	P01

Drawing number: **HE548642 - JAC - LDC - SII_MLT**
 Originator: **JAC**
 Volume: **-DR- Z -3002**

C:\working\jacobs_uk_highways_ssa\0327613\HE548642-JAC-LDC-SII_MLT-DR-Z-3002.dwg - 06/02/2024 20:30:06 - A1 Frame - Arbow

Reproduced by permission of Ordnance Survey on behalf of HMSO. © Crown copyright and database right 2024. All rights reserved. Ordnance Survey Licence number 100030649.



- Notes**
- All dimensions, chainages, levels and co-ordinates are in metres unless stated otherwise.
 - This drawing is to be read in conjunction with all other relevant documentation.
 - The scheme designs shown are illustrative only and will be subject to change as part of detailed design development.
 - The Prohibition of Entry signs are pointing to parts of the scheme that are stopped up for public access. Refer to Streets, Rights of Way and Access Plans (document reference TR010064/APP/2.5).

- Key**
- The Order Limits
 - Land not included within the Order Limits
 - The Scheme
 - Ponds
 - Swales
 - Scheme 30mph Speed Limit
 - Scheme 40mph Speed Limit
 - Scheme 50mph Speed Limit
 - Scheme National Speed Limit
 - Scheme Special Road Speed Limit
 - Local Authority Boundary
 - Scheme Prohibition Of Entry
 - Scheme Variable Speed Limit
 - Scheme Variable Speed Limit Ends
 - Scheme Structure

Rev	Rev. Date	Purpose of revision	Drawn	Checked	Rev'd	Appr'd
P01	06/02/24	DCO SUBMISSION	TA	AP	RB	RB

Development Consent Order Number: TR010064
 Development Consent Order Drawing Number: TR010064/APP/2.6



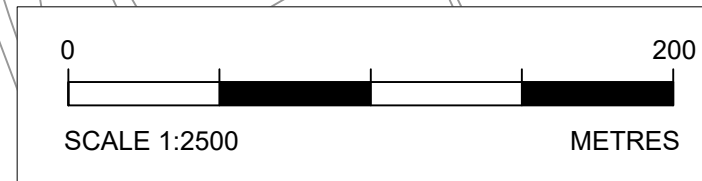
Client: BURY METROPOLITAN BOROUGH COUNCIL

Project: M60/M62/M66 SIMISTER ISLAND INTERCHANGE

Drawing title: **TRAFFIC REGULATION MEASURES PLANS REGULATION 5(2)(O) SHEET 3 OF 5**

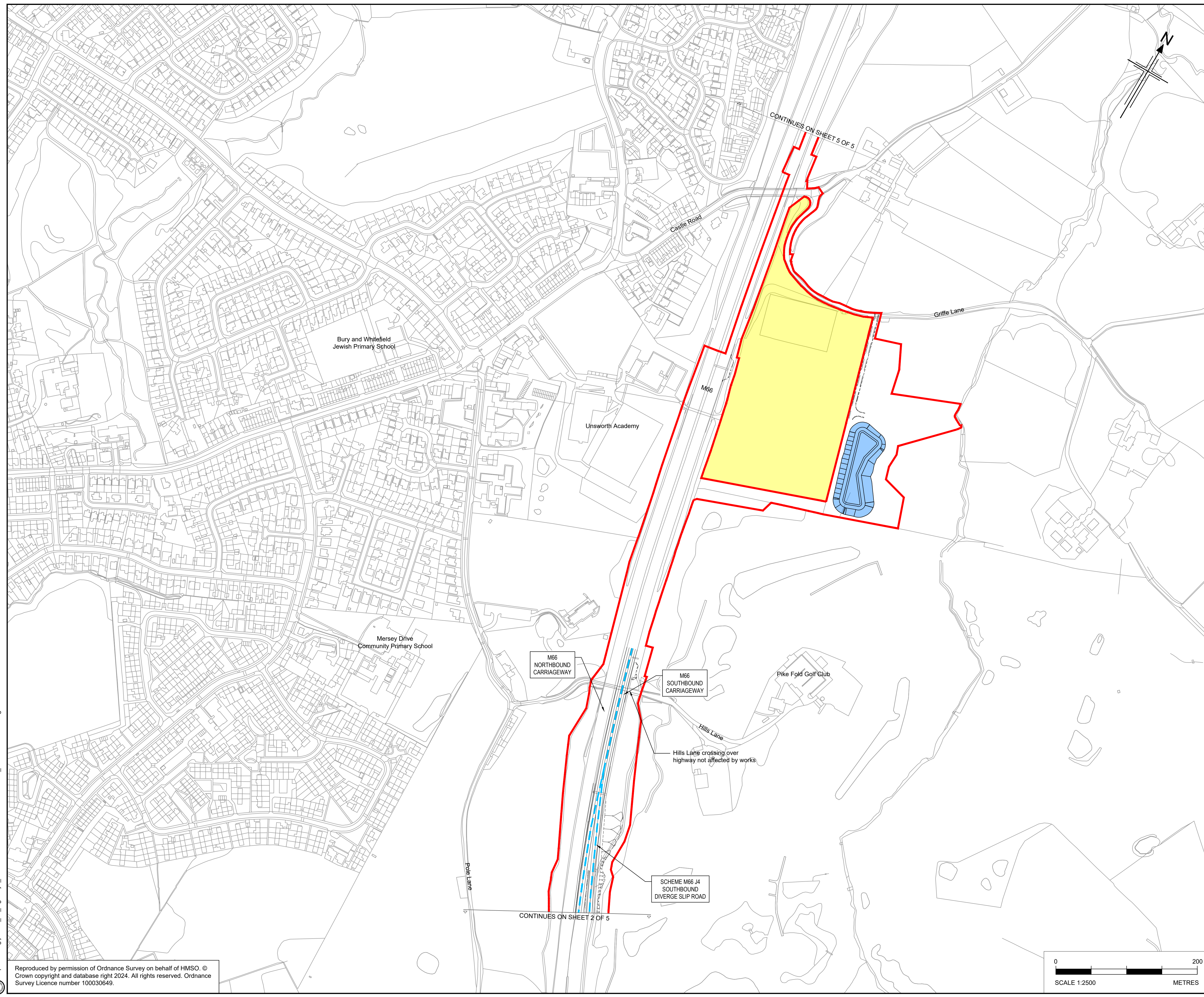
Regulation	Regulation 5(2)(O)		
Purpose of issue	DCO APPLICATION		
State Code	PRELIMINARY		
Project Stage	PCF STAGE 3	Drawing status	S4
Scale at A1 (841x594mm)	1:2500@A1	Rev	P01
Jacobs No.	B36601F0	Client no.	HE548642

Drawing number: HE548642 - JAC - LDC - SII_MLT
 Originator: JAC
 Volume: -LDC-
 Location: SII_MLT
 Type | Role | Number: -DR- Z -3003



C:\working\jacobs_uk_highways_ssa\0327613\HE548642-JAC-LDC-SII_MLT-DR-Z-3003.dwg - 06/02/2024 16:52:00 - A1 Frame - Arlow T

Reproduced by permission of Ordnance Survey on behalf of HMSO. © Crown copyright and database right 2024. All rights reserved. Ordnance Survey Licence number 100030649.



- Notes**
- All dimensions, chainages, levels and co-ordinates are in metres unless stated otherwise.
 - This drawing is to be read in conjunction with all other relevant documentation.
 - The scheme designs shown are illustrative only and will be subject to change as part of detailed design development.
 - The Prohibition of Entry signs are pointing to parts of the scheme that are stopped up for public access. Refer to Streets, Rights of Way and Access Plans (document reference TR010064/APP/2.5).

Key

- The Order Limits
- Land not included within the Order Limits
- The Scheme
- Ponds
- Swales
- Scheme 30mph Speed Limit
- Scheme 40mph Speed Limit
- Scheme 50mph Speed Limit
- Scheme National Speed Limit
- Scheme Special Road Speed Limit
- Local Authority Boundary
- Scheme Prohibition Of Entry
- Scheme Variable Speed Limit
- Scheme Variable Speed Limit Ends
- Scheme Structure

Rev	Rev. Date	Purpose of revision	Drawn	Checked	Rev'd	Appr'd
P01	06/02/24	DCO SUBMISSION	TA	AP	RB	RB

Development Consent Order Number:	TR010064	Development Consent Order Drawing Number:	TR010064/APP/2.6
-----------------------------------	----------	---	------------------

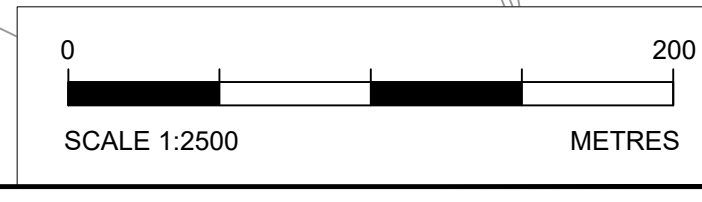


Project
M60/M62/M66 SIMISTER ISLAND INTERCHANGE

Drawing title
TRAFFIC REGULATION
MEASURES PLANS
REGULATION 5(2)(O)
SHEET 4 OF 5

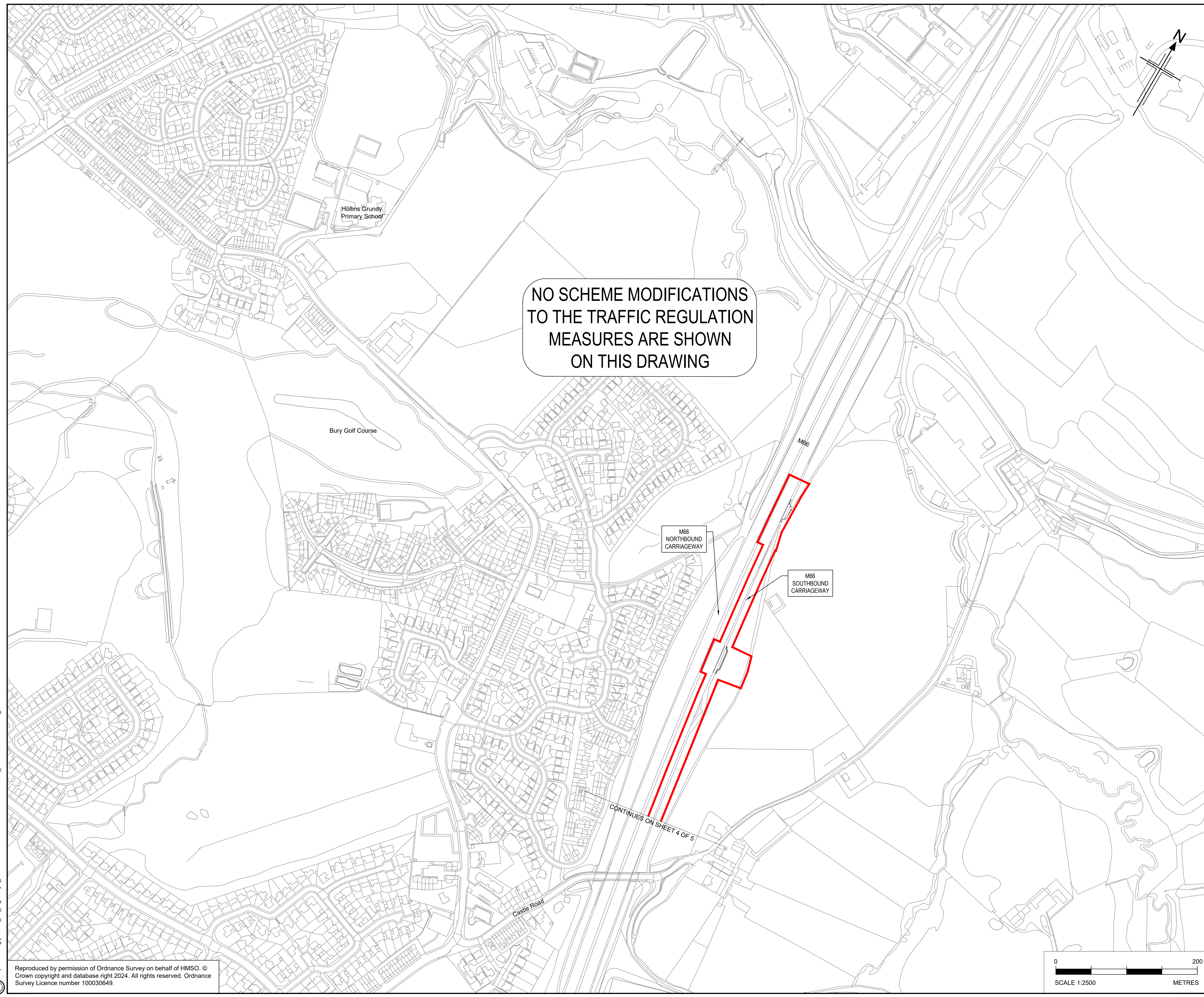
Regulation	Regulation 5(2)(O)		
Purpose of issue	DCO APPLICATION		
State Code	PRELIMINARY		
Project Stage	PCF STAGE 3	Drawing status	S4
Scale at A1 (841x594mm)	1:2500@A1	Rev	P01
Jacobs No.	B36601F0	Client no.	HE548642

Drawing number: HE548642 - JAC - LDC - SII_MLT
 Originator: JAC
 Volume: -DR- Z -3004



C:\working\jacobs_uk_highways_ssa\0327613\HE548642-LDC-SII_MLT-DR-Z-3004.dwg - 06/02/2024 17:12:00 - A1 Frame - Arbow

Reproduced by permission of Ordnance Survey on behalf of HMSO. © Crown copyright and database right 2024. All rights reserved. Ordnance Survey Licence number 100030649.



NO SCHEME MODIFICATIONS
TO THE TRAFFIC REGULATION
MEASURES ARE SHOWN
ON THIS DRAWING

- Notes**
- All dimensions, chainages, levels and co-ordinates are in metres unless stated otherwise.
 - This drawing is to be read in conjunction with all other relevant documentation.
 - The scheme designs shown are illustrative only and will be subject to change as part of detailed design development.
 - The Prohibition of Entry signs are pointing to parts of the scheme that are stopped up for public access. Refer to Streets, Rights of Way and Access Plans (document reference TR010064/APP/2.5).

- Key**
- The Order Limits
 - Land not included within the Order Limits
 - The Scheme
 - Ponds
 - Swales
 - Scheme 30mph Speed Limit
 - Scheme 40mph Speed Limit
 - Scheme 50mph Speed Limit
 - Scheme National Speed Limit
 - Scheme Special Road Speed Limit
 - Local Authority Boundary
 - Scheme Prohibition Of Entry
 - Scheme Variable Speed Limit
 - Scheme Variable Speed Limit Ends
 - Scheme Structure

Rev	Rev. Date	Purpose of revision	Drawn	Checked	Rev'd	Appr'd
P01	06/02/24	DCO SUBMISSION	TA	AP	RB	RB

Development Consent Order Number:	Development Consent Order Drawing Number:
TR010064	TR010064/APP/2.6

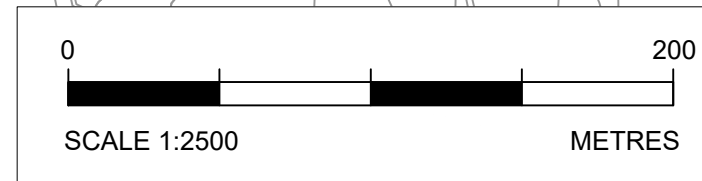


Project
M60/M62/M66 SIMISTER ISLAND INTERCHANGE

Drawing title
**TRAFFIC REGULATION MEASURES PLANS
REGULATION 5(2)(O)
SHEET 5 OF 5**

Regulation	Regulation 5(2)(O)		
Purpose of issue	DCO APPLICATION		
State Code	PRELIMINARY		Drawing status
Project Stage	PCF STAGE 3	S4	
Scale at A1 (841x594mm)	1:2500@A1	Rev	P01
Jacobs No.	B36601F0		
Client no.	HE548642		

Drawing number	PIN	Originator	Volume
HE548642	-	JAC	- LDC -
Location	Type	Role	Number
SII_MLT	-	DR-	Z -3005



C:\working\jacobs_uk_highways_ssa\0327613\HE548642-LDC-SII_MLT-DR-Z-3005.dwg - 06/02/2024 17:35:08 - A1 Frame - Arlow T

Reproduced by permission of Ordnance Survey on behalf of HMSO. © Crown copyright and database right 2024. All rights reserved. Ordnance Survey Licence number 100030649.